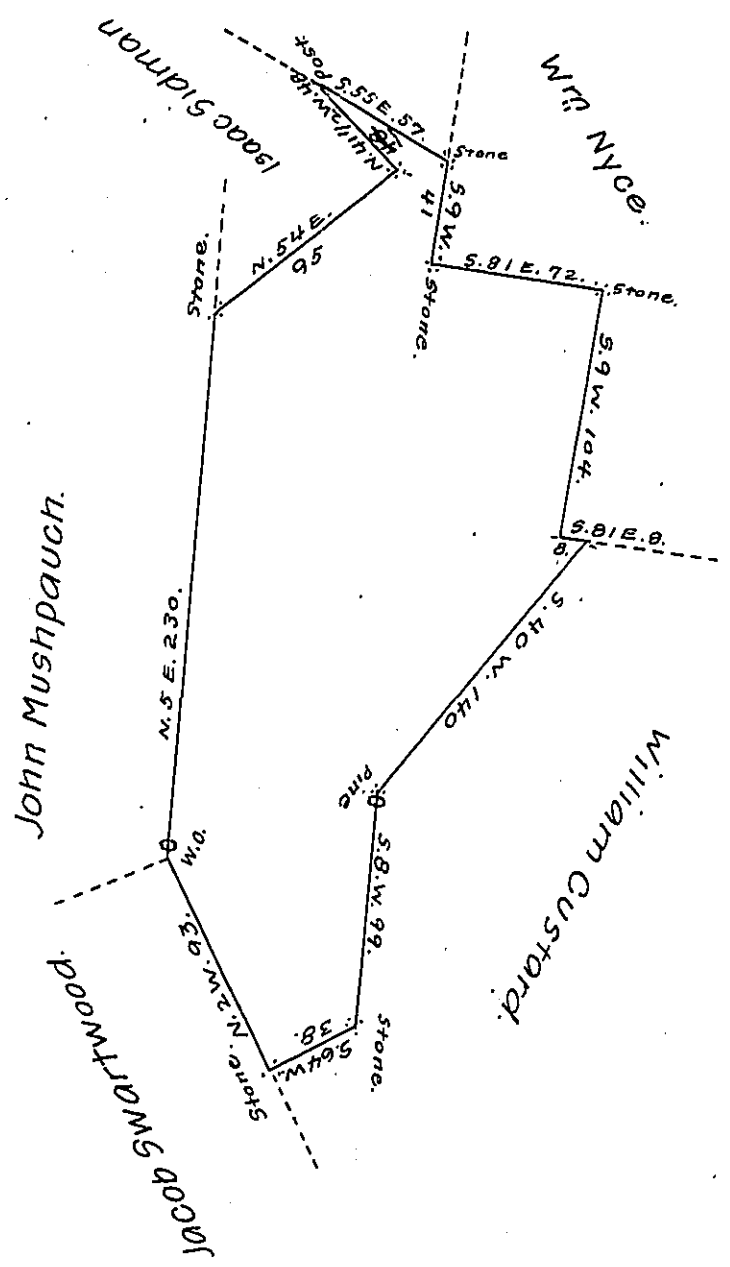


Lehman - PIKE ✓



By virtue of a warrant dated the 18<sup>th</sup> day of <sup>March</sup> ~~January~~ 1793 surveyed the 10<sup>th</sup> January 1815 the above described Tract of land to Barnardus Swartwood, adjoining John Mushpauch, William Nyce, Isaac Sidman and others in the Township of Delaware, County of Pike, containing two hundred and Nineteen Acres and fourteen perches and allowance of six pr. ct & ca.

By Jno Brink, D.S.

To Richard T. Leech, Esq;  
 Surveyor General of Penna. }

Examined and approved by

A.V. Coolbaugh, D.S.

IN TESTIMONY that the above is a copy of the original remaining on file in the Department of Internal Affairs of Pennsylvania, made conformably to an Act of Assembly approved the 16th day of February 1833, I have hereunto set my hand and caused the Seal of said Department to be affixed at Harrisburg, this fourth day of June 1907.

*Henry Houck*  
 Secretary of Internal Affairs.